

 **CHANNEL VISION™**  
**2 Year Limited Warranty**

Channel Vision Technology will repair or replace any defect in material or workmanship which occurs during normal use of this product with new or rebuilt parts, free of charge in the USA, for two years from the date of original purchase. This is a no hassle warranty with no mail in warranty card needed. This warranty does not cover damages in shipment, failures caused by other products not supplied by Channel Vision Technology, or failures due to accident, misuse, abuse, or alteration of the equipment. This warranty is extended only to the original purchaser, and a purchase receipt, invoice, or other proof of original purchase date will be required before warranty repairs are provided.

Mail in service can be obtained during the warranty period by calling (800) 840-0288 toll free. A Return Authorization number must be obtained in advance and can be marked on the outside of the shipping carton.

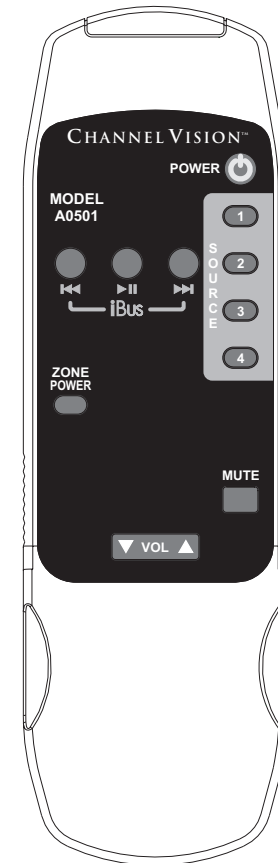
This warranty gives you specific legal rights and you may have other rights (which vary from state to state). If a problem with this product develops during or after the warranty period, please contact Channel Vision Technology, your dealer or any factory-authorized service center.

 **CHANNEL VISION™**  
**channelvision.com**

234 Fischer Avenue, Costa Mesa, California 92626  
(714)424-6500 • (800)840-0288 • (714)424-6510 fax

500-116 rev B

# INSTRUCTIONS



 **CHANNEL VISION™**  
**A0501**  
**REMOTE CONTROL**

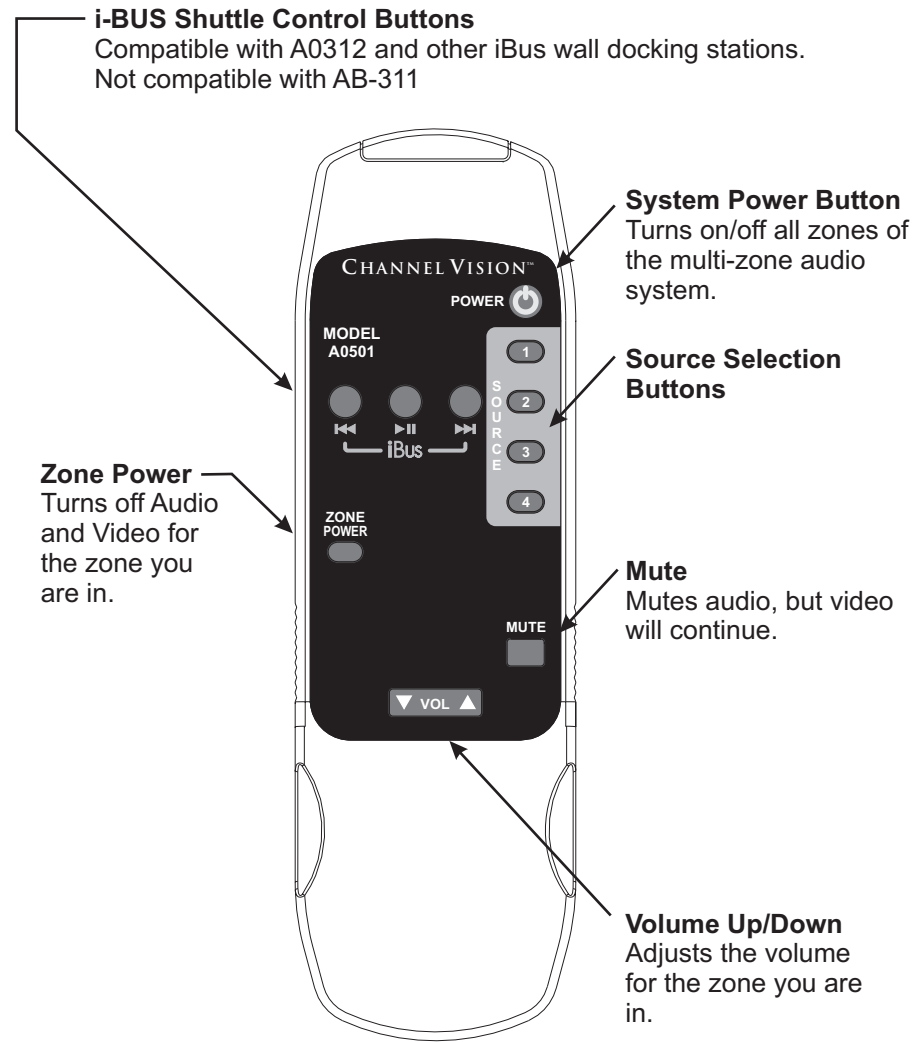
 **CHANNEL VISION™**

©2005 CHANNEL VISION TECHNOLOGY

The **A0501** allows you to operate many of Channel Vision's whole-house audio systems without needing to touch the keypad. Additionally, this remote provides shuttle controls for the A0312 and other compatible iBus products.

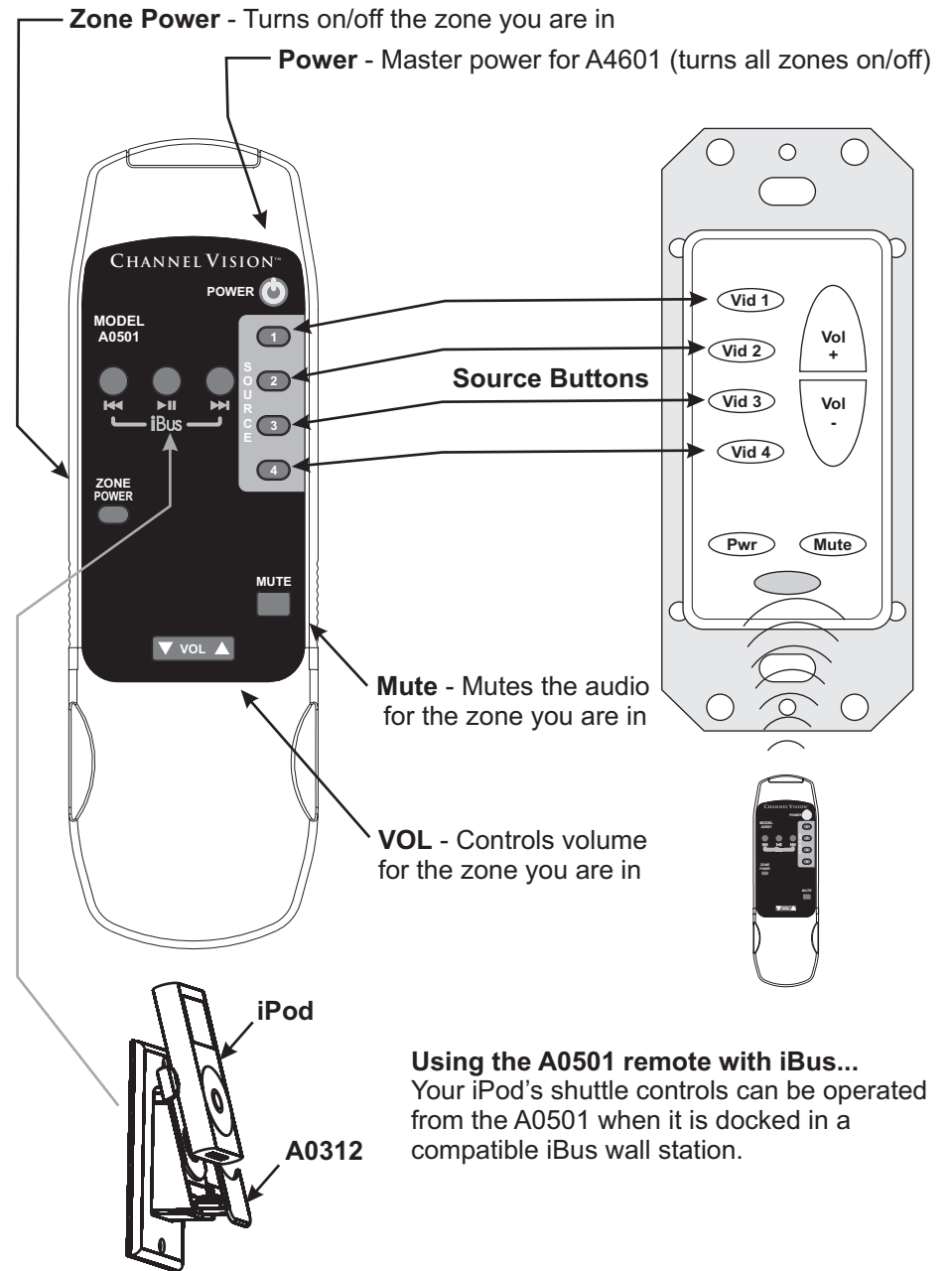
**Features:**

- Easily controls your whole-house audio system
- No programming necessary
- Compatible with: P-1044, AB-124, A4601, and A0312



**Using the A0501 remote control...**

The A0501 is designed to allow you to control your A4601 without having to touch the buttons on the A0127. Simply point the A0501 remote control at the IR sensor located at the bottom of the A0127 and press the desired button.



**Using the A0501 remote with iBus...**

Your iPod's shuttle controls can be operated from the A0501 when it is docked in a compatible iBus wall station.