

CHANNEL VISION™

1 Year Limited Warranty

Channel Vision Technology will repair or replace any defect in material or workmanship which occurs during normal use of this product with new or rebuilt parts, free of charge in the USA, for one year from the date of original purchase. This is a no hassle warranty with no mail in warranty card needed. This warranty does not cover damages in shipment, failures caused by other products not supplied by Channel Vision Technology, or failures due to accident, misuse, abuse, or alteration of the equipment. This warranty is extended only to the original purchaser, and a purchase receipt, invoice, or other proof of original purchase date will be required before warranty repairs are provided.

Mail in service can be obtained during the warranty period by calling (800) 840-0288 toll free. A Return Authorization number must be obtained in advance and can be marked on the outside of the shipping carton.

This warranty gives you specific legal rights and you may have other rights (which vary from state to state). If a problem with this product develops during or after the warranty period, please contact Channel Vision Technology, your dealer or any factory-authorized service center.

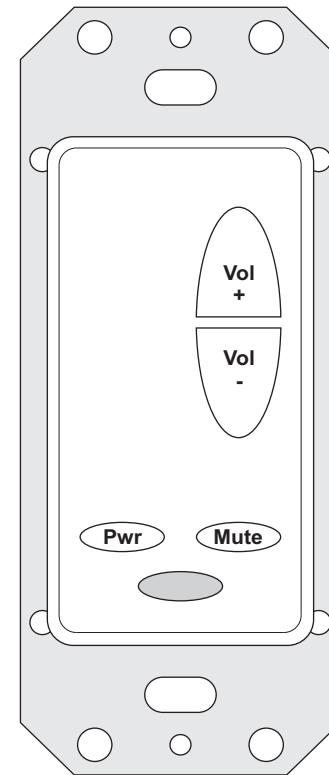
Channel Vision products are not intended for use in medical, lifesaving, life sustaining or critical environment applications. Channel Vision customers using or selling Channel Vision products for use in such applications do so at their own risk and agree to fully indemnify Channel Vision for any damages resulting from such improper use or sale.

CHANNEL VISION™
channelvision.com

234 Fischer Avenue, Costa Mesa, California 92626
(714)424-6500 • (800)840-0288 • (714)424-6510 fax

500-300 revA

INSTRUCTIONS



A0129

IR Keypad for A0350 & WA-350/WA-351

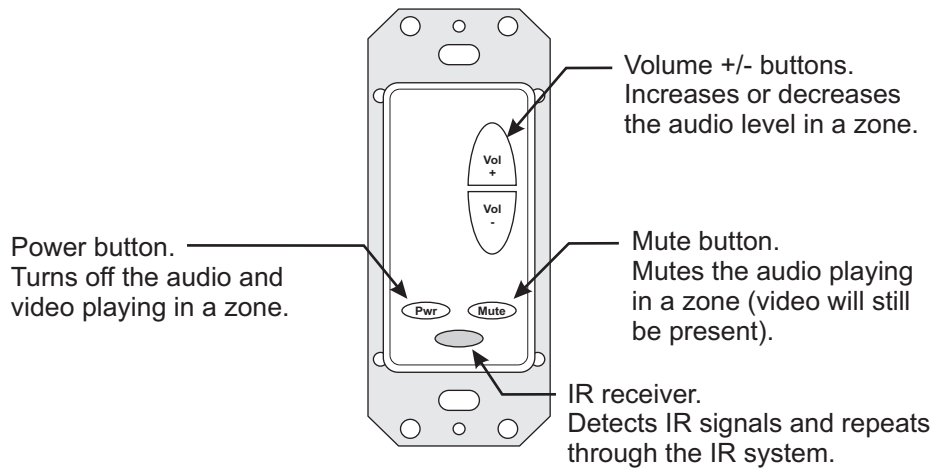
CHANNEL VISION™
©2011 CHANNEL VISION TECHNOLOGY

A0129 Keypad

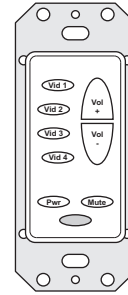
A0129 ... Keypad controller for use with the A0350, WA-350/WA-351

Features:

- Controls Channel Vision's A0350, WA-350, and WA-351
- Available in white



Accessories & Complementary Products (sold separately)



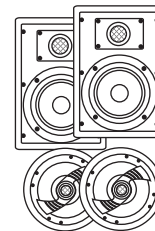
A0127 ... IR repeating keypad. The A0127 contains the IR codes to operate the volume controls in the Amplified Wireless Audio Receiver. You may also use a standard IR receiver or a 3rd party keypad. When using a simple IR receiver, you will need to use the A0505 remote control which contains the IR codes to control the WA-350, WA-351, and A0350. IR codes can be downloaded from www.channelvision.com, or learned from an A0505 remote control.



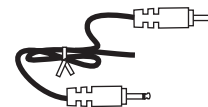
A0501, A0502, or A0505 ... Remote control. Contains IR codes for controlling the Amplified Wireless Audio Receiver as well as many other Channel Vision audio products.



IR-2400 ... Plasma-Proof IR receiver.



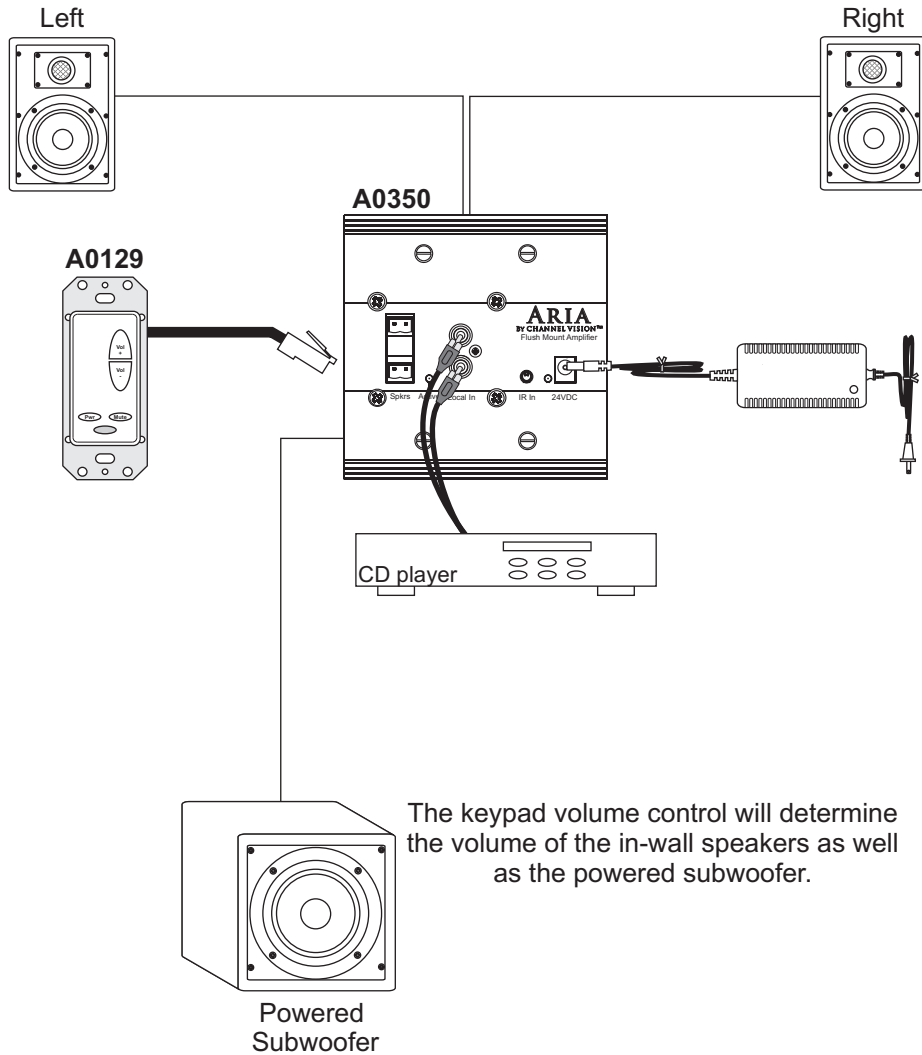
In-wall, In-ceiling Speakers, and Free Standing Speakers... Channel Vision offers a full line of premium speakers. These speakers are perfect for whole-house music or home theater applications.



IR-4180 ... IR link cable. Can be used to transmit IR

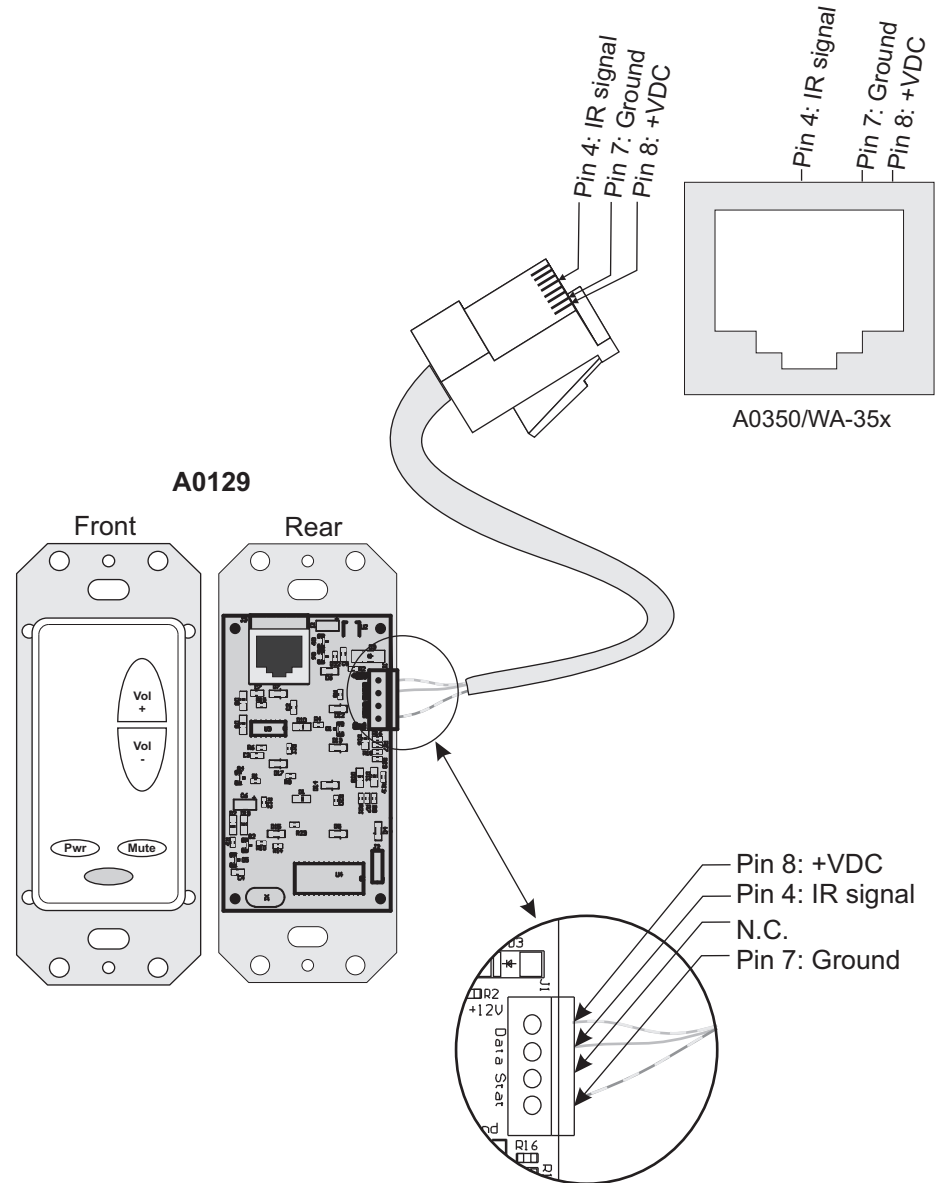
Using the A0350 and A0129 in a Stand-alone System

The A0350 can be flush-mounted in a room to power in-wall speakers. By connecting the audio outputs from an audio source to the RCA inputs of the A0350, the audio signal will be amplified to the in-wall speakers. Most audio sources only offer a fixed audio output, A0350 volume level can be adjusted by using an A0129 keypad or by connecting an IR-2400 and using a compatible remote such as model A0505. The RCA audio outputs on the back of the A0350 can be connected to a powered subwoofer to add more bass to your audio system.

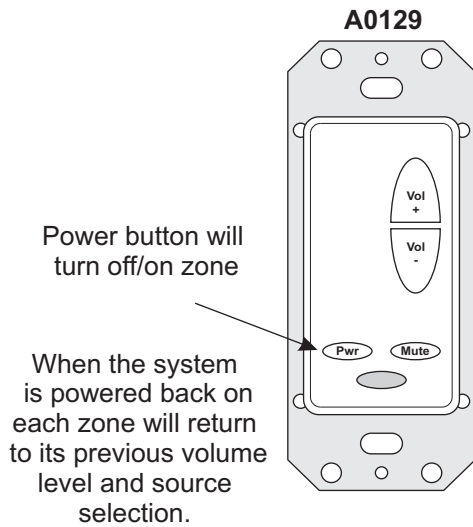
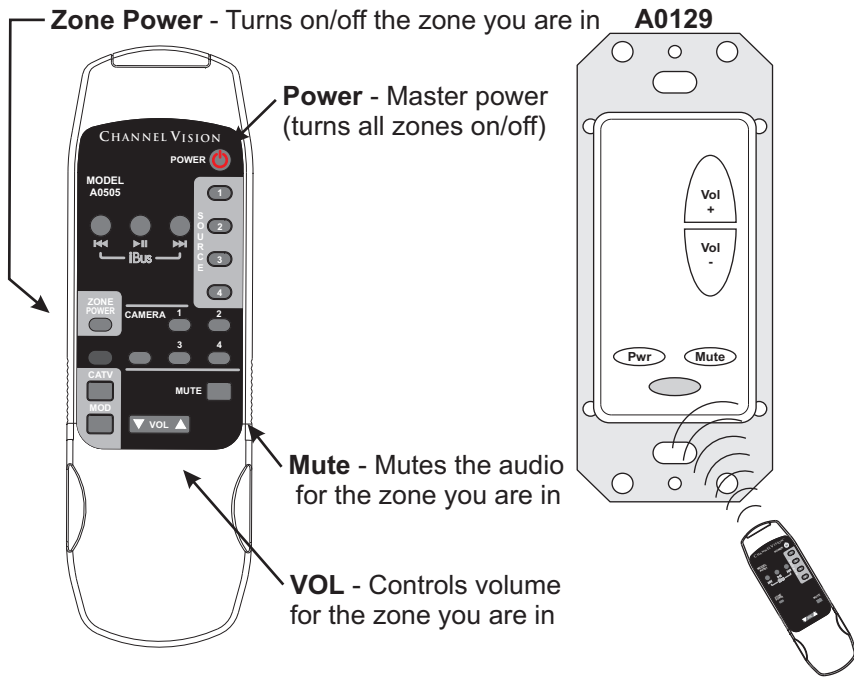


Wiring the A0129 keypad...

Keypads connect to the A0350, WA-350/WA-351 through the RJ45 jacks on the back panel of these products. Connections to the A0129 may be accomplished either by using the RJ45 jack or the screw terminals provided on the back side of the keypad. When using the RJ45 jacks, simply wire both ends of the cable according to the TIA568A standard. When using the screw terminals on the A0129, make sure to wire the RJ45 plug connecting to the as shown below.



Using the A0505 remote control.. designed to control your A0350, WA-35x.
 (Download IR codes at: www.channelvision.com and www.remotecentral.com)



Connection to A0350, WA-35x Amplifier

